

GATE HARDWARE CORPORATION

SEMI-PRIVATE GATE FRAME ORDER FORM

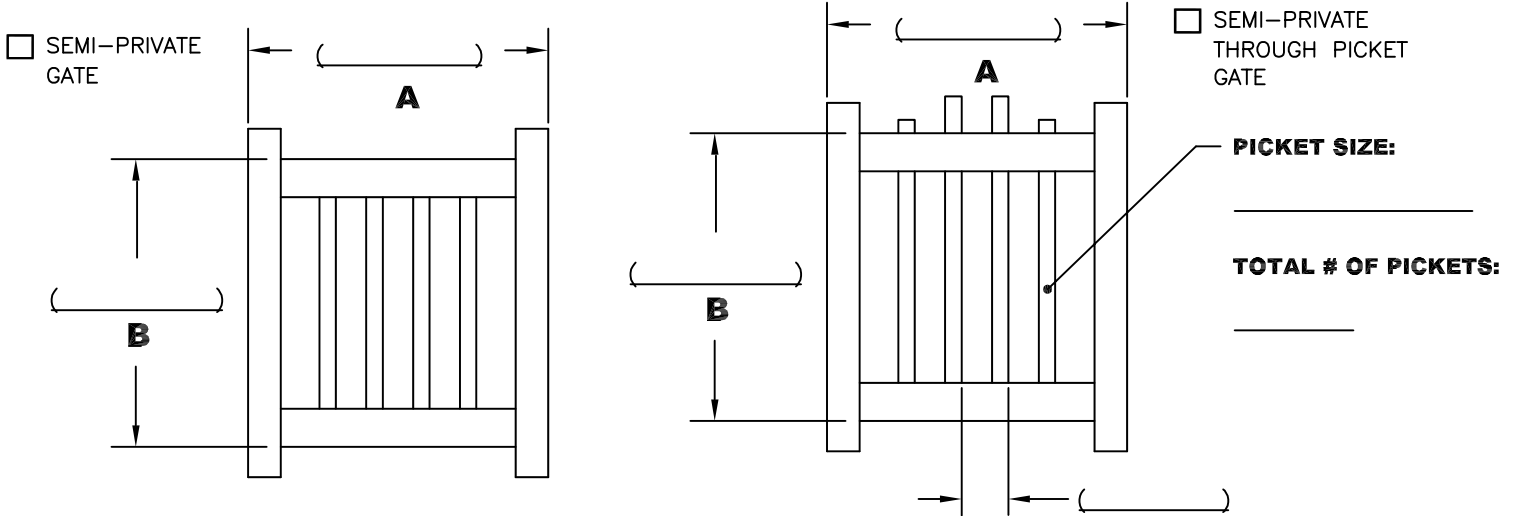
PAGE _____ of _____

PLEASE USE ONE ORDER FORM FOR EACH GATE SIZE/STYLE

CONTACT PERSON: _____ COMPANY NAME: _____
 ORDER DATE: _____ PHONE #: _____
 SHIP METHOD: _____ FAX #: _____
 REQ'D SHIP DATE: _____ P.O.: _____

1. QUANTITY OF GATES: _____ **2. INDICATE GATE FRAME MATERIAL:** GALVANIZED STEEL ALUMINUM
 STAINLESS STEEL

3. INDICATE GATE STYLE AND DIMENSIONS:



3.a. INDICATE HORIZONTAL J-CHANNEL MATERIAL:

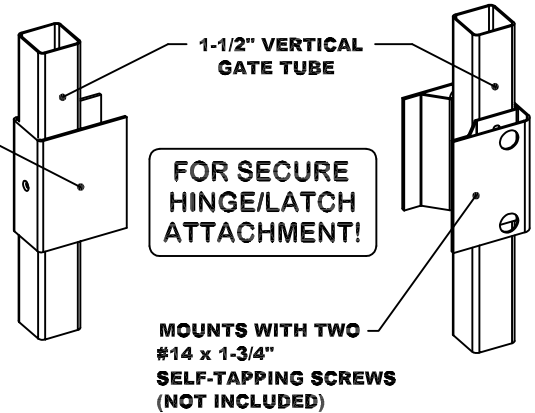
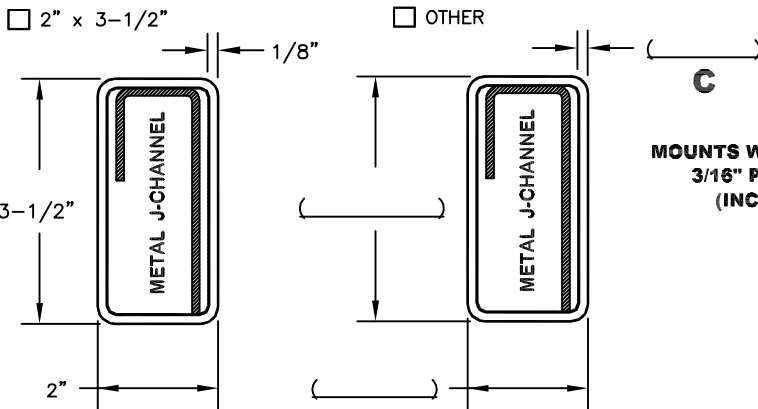
- GALVANIZED STEEL
 STAINLESS STEEL

J-CHANNELS FOR ALL SEMI-PRIVATE GATES, INCLUDING ALUMINUM, ARE EITHER GALVANIZED OR STAINLESS STEEL

6. I WANT GATE HARDWARE CORPORATION HINGE/LATCH BRACKETS FOR EACH GATE:

- YES
 NO

4. HORIZONTAL J-CHANNEL STYLE AND DIMENSIONS:



5. VERTICAL POST STYLE AND WALL THICKNESS:

- 2" x 3-1/2" 4" x 4"
 3-1/2" x 3-1/2" 5" x 5"

VERT. POST WALL THICKNESS: _____

HINGE/LATCH BRACKET FOR 2" x 3-1/2" VINYL POST

HINGE/LATCH BRACKET FOR 4" x 4" VINYL POST

GATE HARDWARE CORPORATION

GATE FRAMES ARE PATENT PENDING

<http://www.gatehardware.com>

Rev. 5/10/04

• 744 South 100 East • Provo, UT 84606
 (801) 373-6813 • FAX (801) 373-3443
 TOLL FREE (800) 473-6813